



**5 Danvers Mead, Chippenham, SN15 3TP**

**£224,950**

Located within a cul de sac on the Pewsham estate, this semi detached home offers parking for two cars and a generous rear garden laid to lawn. Internally comprising; entrance hall, kitchen, lounge, two bedrooms and a bathroom. With a variety of amenities, Primary and secondary Schools close by it has a lot to offer. Offered for sale with NO ONWARD CHAIN.



## Entrance Hall



Front door, window to the front, under stairs cupboard, doors to the kitchen, lounge and stairs to the first floor.

## Kitchen 10'11" x 5'11" (3.33m x 1.80m)



Double glazed windows to the side and front, range of floor and wall mounted units, stainless steel sink and drainer, gas cooker and hob, space floor under cabinet appliances and wall mounted gas fired boiler.



## Lounge 13'08" x 11'11" (4.17m x 3.63m)



Double glazed window and double glazed door to the rear, radiator.



## Landing

Loft access and doors to the bedrooms and bathroom.



### **Bedroom One 11'10" x 9' (3.61m x 2.74m)**



Double glazed window to the rear and radiator.

### **Bedroom Two 9'02" x 8'06" (2.79m x 2.59m)**



Double glazed windows to the front, radiator, wardrobe and over stairs cupboard.

### **Bathroom 6'02" x 5'08" (1.88m x 1.73m)**



Double glazed window to the side, toilet, wash hand basin, bath with electric shower over.

### **Rear Garden**



Generous plot laid predominantly to lawn with a variety of shrubs and plants, shed, patio and gated side access.

### **Driveway**

Tandem parking for two cars.

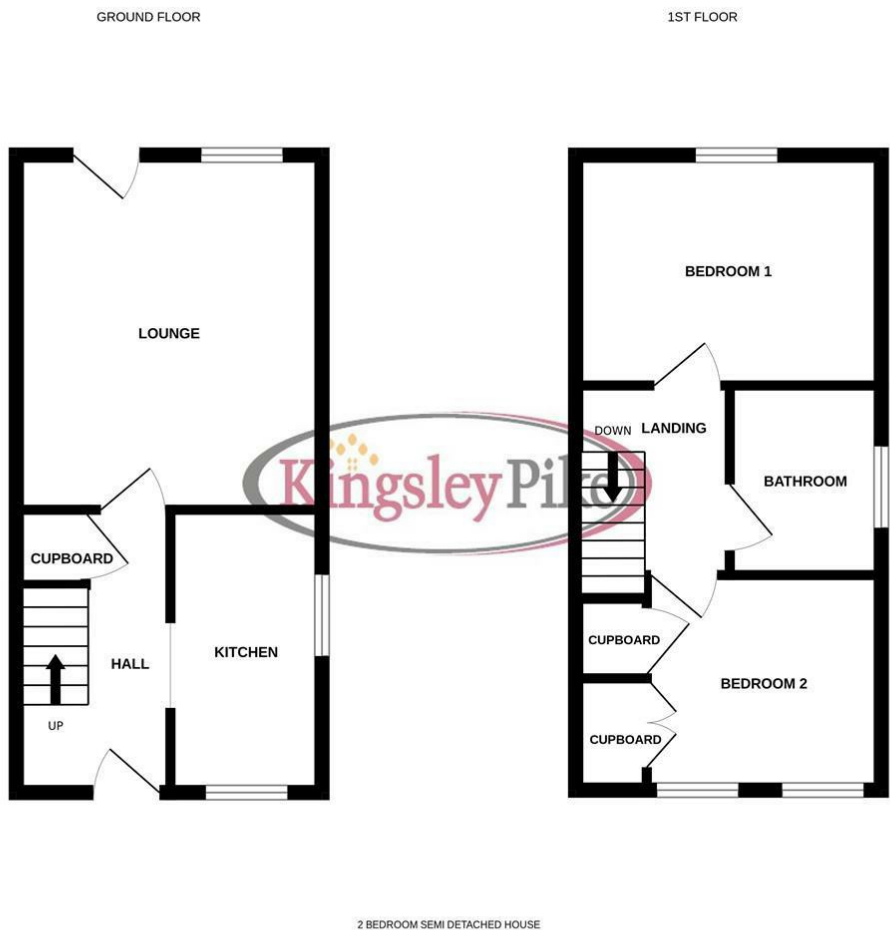
### **Tenure**

We are advised by the .gov website that the property is Freehold.

### **Council Tax**

We are advised by the . gov website that the property is band B.

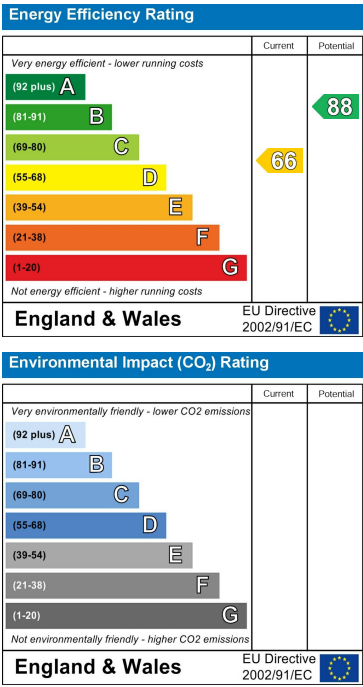
Floor Plan



Area Map



Energy Efficiency Graph



These particulars, whilst believed to be accurate are set out as a general outline only for guidance and do not constitute any part of an offer or contract. Intending purchasers should not rely on them as statements of representation of fact, but must satisfy themselves by inspection or otherwise as to their accuracy. No person in this firms employment has the authority to make or give any representation or warranty in respect of the property.